

Cover Sheet Learning Disability Programme Board Papers

Report to
Learning Disability Programme Board Meeting

Date of meeting: 19 November 2013

Attachment number: LDPB (13)42

Title of paper
Special Educational Needs (SEN) and Integrated Care Pathways

Summary
This paper gives the latest information from the Department of Education on SEN and integrated care pathways.

Action required / recommendation
FOR INFORMATION AND DISCUSSION

Board members are asked to consider the question:
- How can Local Authorities/ CCGs smooth the transition between children's and adult services, particularly on social care?

Learning Disability Programme Board



Helen Nix, DfE and Gareth James, DH



Department
for Education

A reminder: the case for change

The current system is not working for families and children:

- ✗ Too many children with SEN have their needs picked up late;
- ✗ Young people with SEN do less well than their peers at school and college and are more likely to be out of education, training and employment at 18;
- ✗ Schools and colleges can focus too much on the SEN label rather than meeting the child's needs, and the current Statements/ Learning Difficulty Assessments do not focus on life outcomes;
- ✗ Too many families have to battle to find out what support is available and in getting the help they need from education, health and social care services; and
- ✗ When a young person leaves school for further education, they enter a very different system which does not carry forward the rights and protections that exist in the SEN system in schools.



Our vision

- ✓ Children's SEN are picked up early and support is routinely put in place quickly;
- ✓ Staff have the knowledge, understanding and skills to provide the right support for children and young people who have SEN or are disabled;
- ✓ Parents know what they can reasonably expect their local school, college, LA & local services to provide, without having to fight for it;
- ✓ Aspirations for children and young people are raised through an increased focus on life outcomes, including employment;
- ✓ For more complex needs, an integrated assessment and a single Education, Health and Care Plan are in place from birth to 25; and
- ✓ There is greater control for parents and young people over the services they and their family use.





Special educational needs

Listening to the young
people who know



Department
for Education

Children and Families Bill 2013



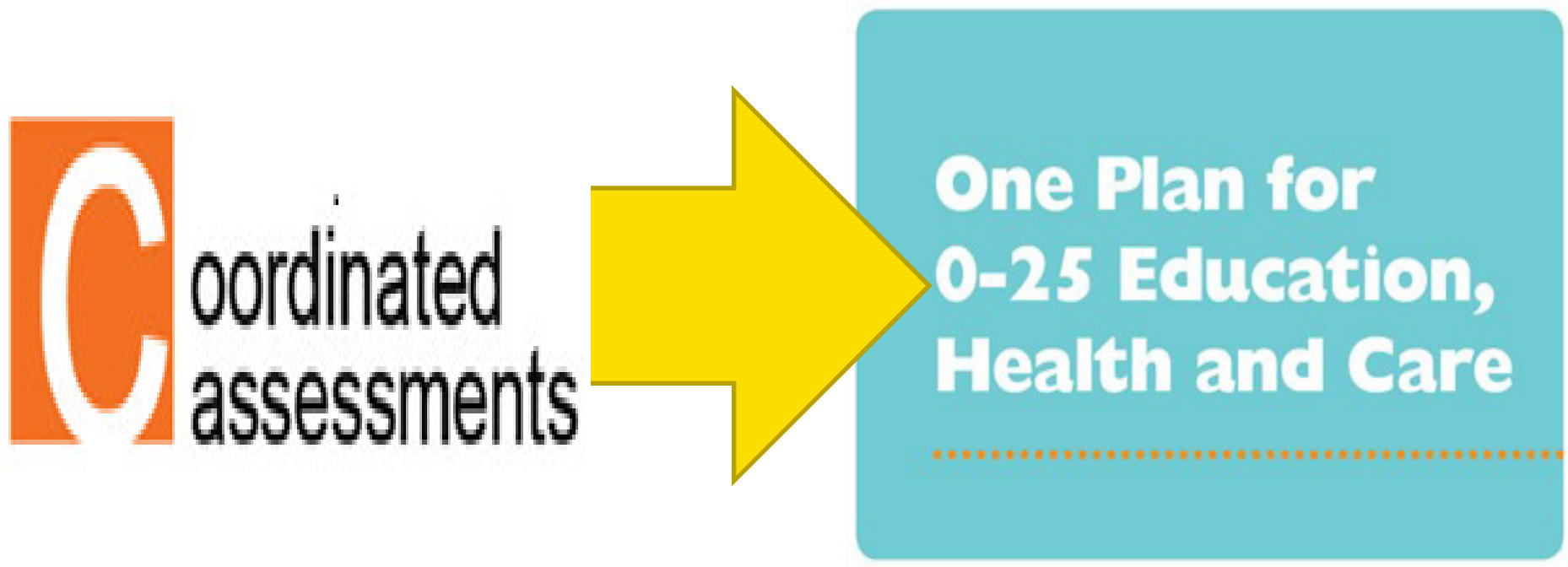
Key Highlights



1. Involvement of children, young people and parents at the heart of legislation



2. More coordinated assessment process; new 0-25 Education, Health and Care Plan



3. LA, health and care services to commission services jointly for SEN.

Joint Commissioning Strategy

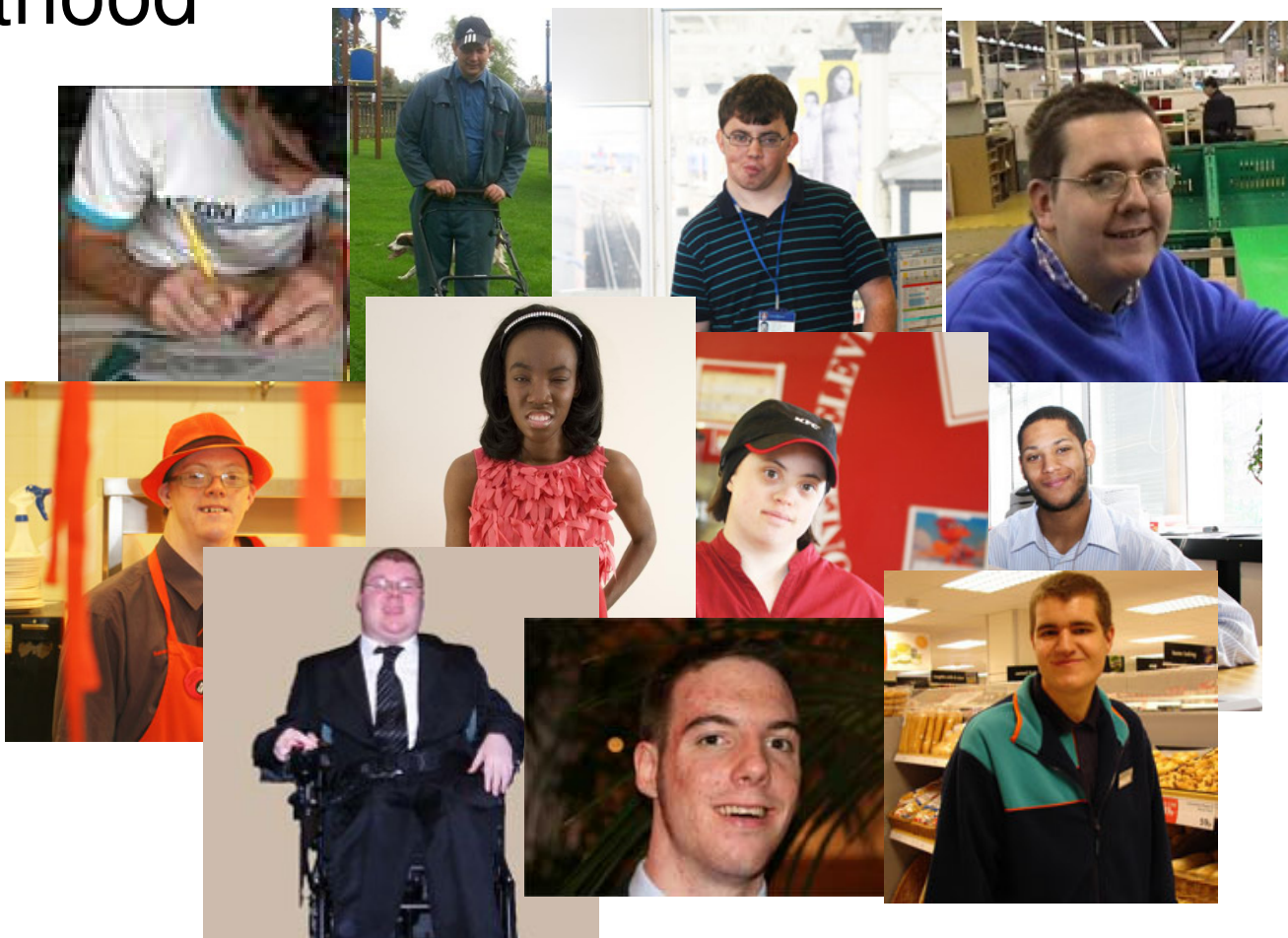


Department
for Education

4. LAs to
publish a
clear,
transparent
local offer
of services
for all CYP
with SEN

Department
for Education

5. New statutory protections for young people aged 16-25; stronger focus on preparing for adulthood



6. Offer of a personal budget for families and young people with a Plan, extending choice and control over their support



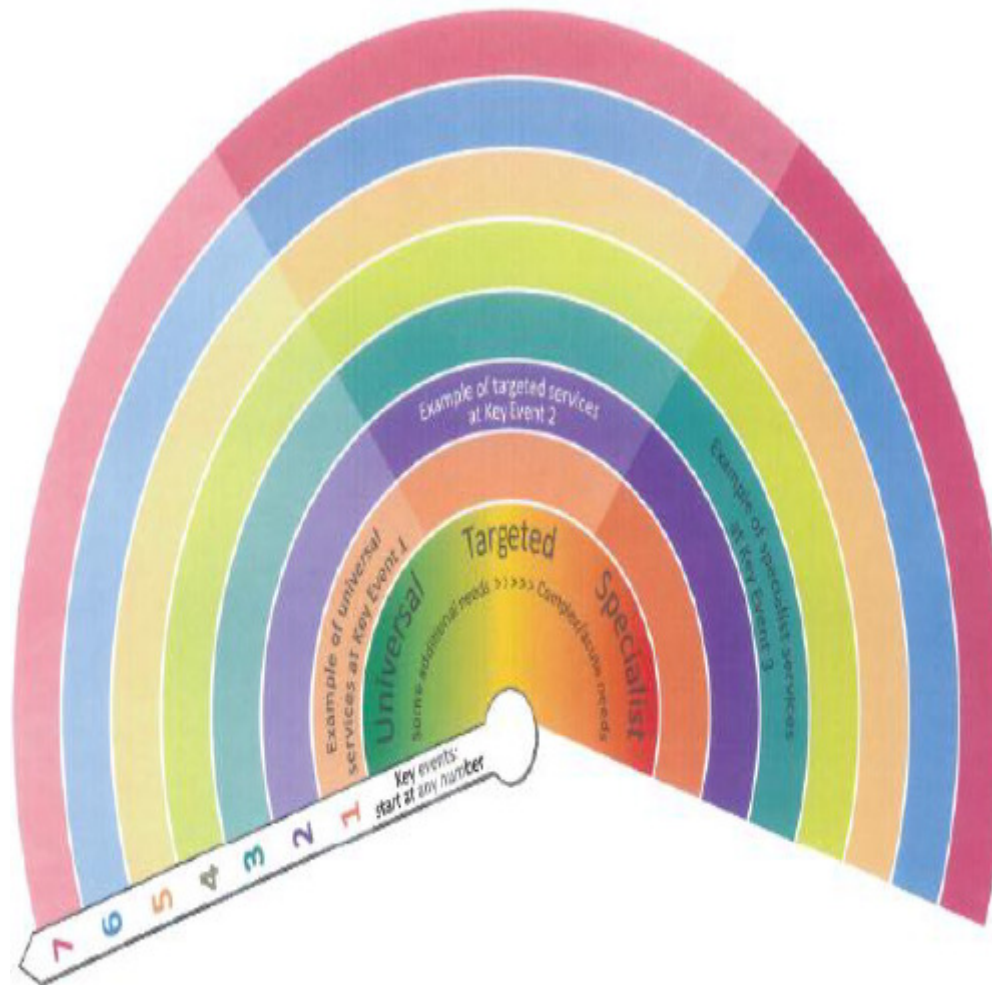
7. All SEN duties to apply equally to **all** schools, inc. Academies and Free Schools



Department
for Education

What does that mean for integrated care pathways?





Key

- Key event 1: Something isn't as expected (from birth or later on)
- Key event 2: Diagnosis
- Key event 3: Early years and starting school
- Key event 4: Play and leisure time
- Key event 5: Growing up, puberty and moving to secondary school
- Key event 6: Becoming an adult and preparing for the future
- Key event 7: Adult life



.....

Questions

.....

Comments

.....

Points of clarity

.....

Discussion



Department
for Education